

# The Asset Connection.....

The Allegheny Regional Asset District provides public support to regional assets through receipt of a portion of the Allegheny County Sales and Use Tax.

Regional assets are defined as civic, cultural and recreational entities, libraries, parks and sports facilities.

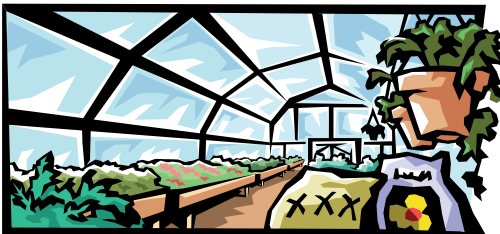
As a part of its mandate, the District Board has adopted an Access and Opportunity Policy designed to enhance the development of minority and women owned businesses. The District supports MBE/WBE trade organizations, fairs and technical assistance seminars and provides information about the assets, what they purchase and who to contact in their organization.

Following is a directory of the major assets receiving District support. Connect to others via at [www.radworkshere.org](http://www.radworkshere.org).

## ◆ Phipps Conservatory

One Schenley Park  
Pittsburgh, Pa. 15213 412-622-6915  
Contact: Lisa Macioce 412-622-7363 (Fax)

Major Purchases - plant materials, chemicals and soils, building supplies and equipment, paper and office supplies, advertising, services such as entertainers, teachers, instructors and contractors.



## ◆ Sports and Exhibition Authority

425 Sixth Avenue Suite 2750  
Pittsburgh, Pa. 15219  
Contact: Rosanne Casciato 412-393-0200

◆ Major Purchases - Electrical supplies, paper products, cleaning materials, uniforms, printing, contractors, computer equipment and office supplies, professional services, legal, accounting, construction management, architectural, engineering and temporary services.

## ◆ The Carnegie Library of Pittsburgh

4400 Forbes Avenue  
Pittsburgh, Pa. 15213 412-578-2467  
Contact: Linda Barsevich 412-622-1922 (Fax)

Major Purchases - Library furniture, office furniture, office supplies, computers, computer supplies, microfilm equipment, video cassette cases, books.

## ◆ The Pittsburgh Zoo

One Wild Place  
Pittsburgh, Pa. 15206 412-365-2510  
Contact: Jackie Vincunas 412-665-3661 (Fax)

Major Purchases - Animal food, office supplies and equipment, maintenance tools and supplies, horticulture tools and supplies, security services, vehicles maintenance, equipment rental, consultants, contractors for various projects.

## ◆ Allegheny County Regional Parks

Department of Minority/Women/Disadvantaged Business Enterprise  
416 County Office Building  
Pittsburgh, Pa. 15219 412-350-4309  
Contact: Ruth Byrd-Smith 412-350-4915 (Fax)

Major Purchases: The County of Allegheny General Services Department is responsible for expenditures of millions of dollars annually on commodities ranging from office supplies to automobiles and sophisticated test equipment. The County also contracts large and small construction projects and for professional services administered through the Dep't. Of Public Works. The County also utilizes various consulting and other services. The MBE/WBE/DBE Dept. can provide information on procedures used for proposals and purchasing as well as on certification procedures that it can provide to qualified firms.

## ◆ City of Pittsburgh Regional Parks

Equal Opportunity Review Commission  
448 City County Building  
Pittsburgh, Pa. 15219 412-255-8804  
Contact: Phillipe Petite (Mgr.) 412-255-4794 (Fax)

Major Purchases: The City purchases various ground and building supplies for use in the parks including chemicals for pools, plant materials, tools and equipment. The city also contracts for large and small construction projects and for consulting services of various kinds. The Parks are administered through the Department of Parks and Recreation. Purchasing and other services are provided by other Departments. The City M/WBE office can provide information on the purchasing/proposal process.

## ◆ The Carnegie Institute

4400 Forbes Avenue  
Pittsburgh, Pa. 15213  
Contact: Don Osterwise 412-578-2467  
412-622-1922 (Fax)

The Carnegie operates the Museums of Natural History and Art, Warhol Museum and Science Center. Major purchases include office supplies and equipment, exhibit materials, maintenance supplies and materials, consulting services, contractors for various projects.

## ◆ The Allegheny County Library Association

22 Wabash Street #203  
Pittsburgh, Pa. 15220 412-921-1123  
Contact: Marilyn Jenkins 412-921-0734 (Fax)

The Library Association serves as a coordinating office for an association of independently owned and operated public libraries. The Association itself purchases some office supplies and consulting services. A list of all libraries participating in this grant is available from the District.



◆ **City of McKeesport-Renziehausen Park**

502 5th Avenue

McKeesport, Pa. 15132

412-675-5030

Contact: Dennis Pittman

412-675-5049 (Fax)

Major Purchases: Park maintenance and cleaning supplies, equipment, gardening supplies and materials. Some contracting is undertaken.

◆ **National Aviary in Pittsburgh, Inc.**

Allegheny Commons West

Pittsburgh, Pa. 15212

412-323-7235 X205

Contact: Cheryl Tracy

412-323-4264 (Fax)

Major purchases include food supplies for birds, animal care supplies and equipment, contract veterinary services, lab services, maintenance supplies and equipment, trash and snow removal, glass and equipment repair, office supplies and various administrative services, advertising printing, plant materials and gift shop inventory.

◆ **The Pittsburgh Cultural Trust**

803 Liberty Avenue

Pittsburgh, Pa. 15222

412-471-5170

Contact: Rona Nesbit

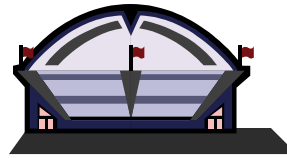
412-5945 (Fax)

Major Purchases - Office products and equipment, theater equipment and supplies, cleaning, security and concession services, legal, accounting, consulting, construction management, architectural and engineering services.

**Shared Services Department of the Cultural Trust**

A collaborative enterprise between Cultural District arts organizations that seeks to increase revenue opportunities for participating organizations, improve customer service and seek cost sharing and efficiencies where possible. The goods purchased are similar to those listed above for the Trust.

Contact: 412-471-6080



◆ **Pittsburgh Symphony**

Heinz Hall for the Performing Arts

600 Penn Avenue

412-392-4813

Pittsburgh, Pa. 15222

412-392-4877 (Fax)

Contact: Scott Michael

Major Purchases: Office supplies, equipment and maintenance, consulting services, contractors, auditing, mail services, design and promotional services.

◆ **Historical Society of Western Pennsylvania**

1212 Smallman Street

Pittsburgh, Pa. 15222

412-454-6383

Contact Lori Presto

412-454-6030 (Fax)

Major Purchases - Office supplies and equipment, paper products, preventative maintenance services and general maintenance services, auditing and printing.

◆ **The Allegheny Regional Asset District**

[www.radworkshere.org](http://www.radworkshere.org)

[dd@radworkshere.org](mailto:dd@radworkshere.org)

412-227-1900

Contact: David Donahoe

412-227-1905 (Fax)

Purchasing Areas: Office and computer supplies, equipment, consulting services, graphic and printing services.



In addition to the contractual and major assets listed above, the District also provides grants to a number of other agencies. A complete listing is available from the District office or on the web page.

Contact the assets directly for more information about business opportunities. Information in this brochure has been provided and/or verified by the assets. The District does not serve as agent for nor does it warrant the creditworthiness of the assets. Feedback on this program and on the response received from contact with the assets is welcome and invited.

(publish 2009)

Printing by Jones Printing, Pittsburgh Pa.

# Allegheny Regional Asset District



## Access and Opportunity



The Allegheny Regional Asset District

412-227-1900 Fax 412-227-1905

e-mail [info@radworkshere.org](mailto:info@radworkshere.org)

Web page: [radworkshere.org](http://radworkshere.org)